

Natural changes of population 1961 – 2022

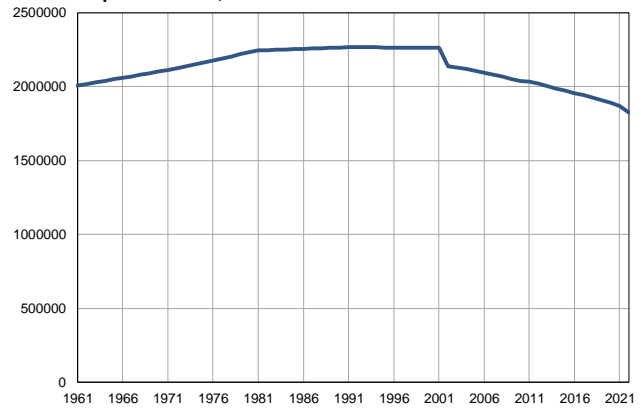
Profile
July 2023

Šumadija and West Serbia

	1961	2022
Population size	2006793	1824896
Livebirths, Number	36671	16434
Deaths, Number	16580	30226
Natural increase, Number	20091	-13792
Infants deaths, Number	2297	52
Livebirths, per 1,000 population	18	9
Deaths, per 1,000 population	8	17
Natural increase, per 1,000 population	10	-8
Infants deaths, per 1,000 livebirths	63	3

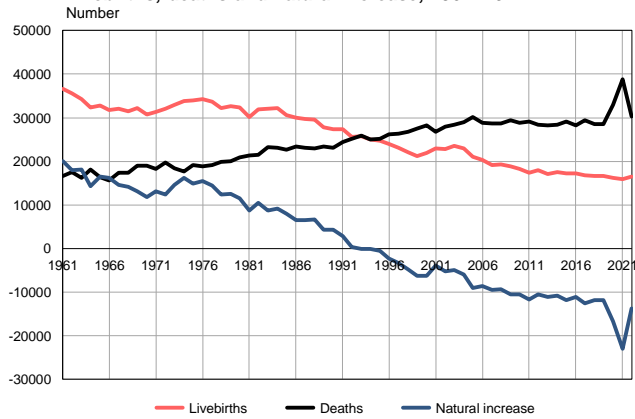
Source: Vital Statistics, SORS

Population size, 1961–2022



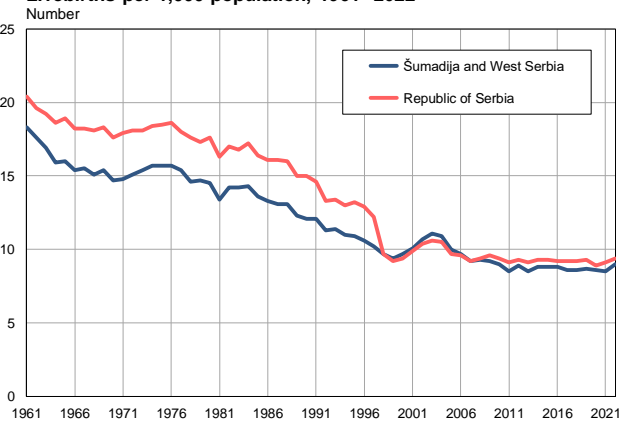
Source: Vital Statistics, SORS

Livebirths, deaths and natural increase, 1961–2022



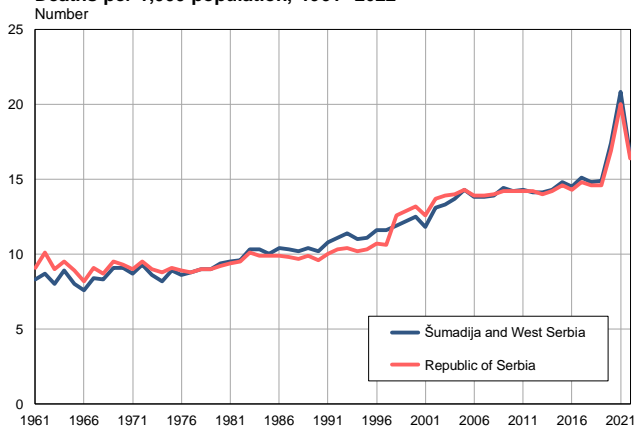
Source: Vital Statistics, SORS

Livebirths per 1,000 population, 1961–2022



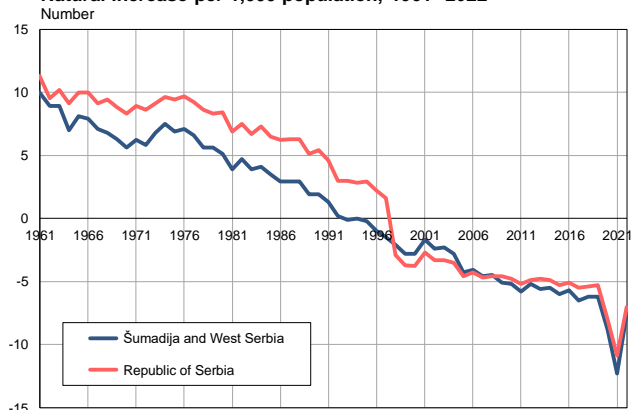
Source: Vital Statistics, SORS

Deaths per 1,000 population, 1961–2022



Source: Vital Statistics, SORS

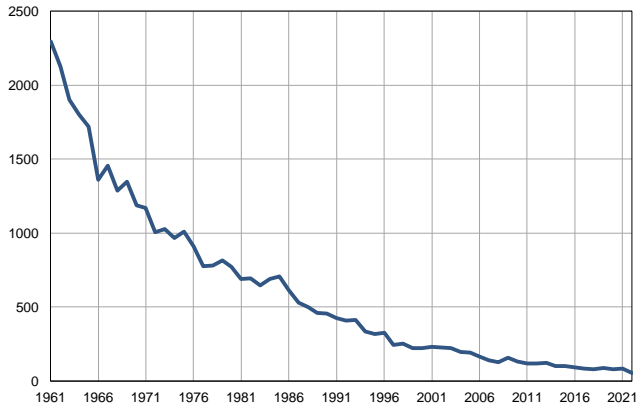
Natural increase per 1,000 population, 1961–2022



Source: Vital Statistics, SORS

Infants deaths, 1961–2022

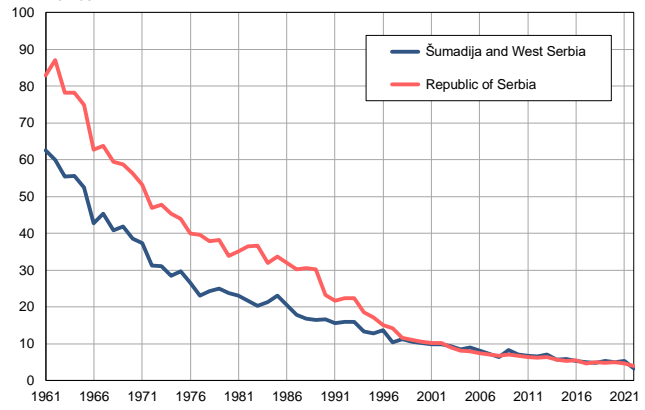
Number



Source: Vital Statistics, SORS

Infants deaths per 1,000 livebirths, 1961–2022

Number



Source: Vital Statistics, SORS

Table. Natural changes of population, Šumadija and West Serbia

Year	Number of population	Livebirths	Deaths	Natural increase	Infants deaths	per 1000 population			Infant deaths per 1000 livebirths
						Livebirths	Deaths	Natural increase	
1961	2006793	36671	16580	20091	2297	18.3	8.3	10.0	62.6
1962	2017300	35554	17602	17952	2128	17.6	8.7	8.9	59.9
1963	2027805	34323	16234	18089	1900	16.9	8.0	8.9	55.4
1964	2038311	32420	18071	14349	1801	15.9	8.9	7.0	55.6
1965	2048818	32812	16313	16499	1721	16.0	8.0	8.1	52.5
1966	2059326	31798	15596	16202	1362	15.4	7.6	7.9	42.8
1967	2069830	32034	17407	14627	1455	15.5	8.4	7.1	45.4
1968	2080337	31510	17317	14193	1285	15.1	8.3	6.8	40.8
1969	2090843	32160	18977	13183	1346	15.4	9.1	6.3	41.9
1970	2101348	30810	19042	11768	1185	14.7	9.1	5.6	38.5
1971	2111855	31338	18281	13057	1168	14.8	8.7	6.2	37.3
1972	2125057	32072	19704	12368	1005	15.1	9.3	5.8	31.3
1973	2138260	33007	18400	14607	1026	15.4	8.6	6.8	31.1
1974	2151464	33880	17738	16142	965	15.7	8.2	7.5	28.5
1975	2164668	34017	19173	14844	1008	15.7	8.9	6.9	29.6
1976	2177871	34231	18792	15439	910	15.7	8.6	7.1	26.6
1977	2191071	33635	19209	14426	775	15.4	8.8	6.6	23.0
1978	2204277	32274	19919	12355	780	14.6	9.0	5.6	24.2
1979	2217478	32580	20055	12525	815	14.7	9.0	5.6	25.0
1980	2230682	32400	20943	11457	772	14.5	9.4	5.1	23.8
1981	2243885	30093	21369	8724	691	13.4	9.5	3.9	23.0
1982	2246140	31936	21471	10465	694	14.2	9.6	4.7	21.7
1983	2248393	32019	23234	8785	646	14.2	10.3	3.9	20.2
1984	2250648	32206	23075	9131	690	14.3	10.3	4.1	21.4
1985	2252901	30610	22640	7970	705	13.6	10.0	3.5	23.0
1986	2255158	29939	23360	6579	613	13.3	10.4	2.9	20.5
1987	2257412	29658	23170	6488	527	13.1	10.3	2.9	17.8
1988	2259665	29611	22987	6624	498	13.1	10.2	2.9	16.8
1989	2261920	27836	23472	4364	458	12.3	10.4	1.9	16.5
1990	2264173	27400	23069	4331	456	12.1	10.2	1.9	16.6
1991	2266428	27329	24427	2902	423	12.1	10.8	1.3	15.5
1992	2266047	25593	25195	398	409	11.3	11.1	0.2	16.0
1993	2265665	25777	25900	-123	410	11.4	11.4	-0.1	15.9
1994	2265283	24958	24977	-19	332	11.0	11.0	0.0	13.3
1995	2264902	24678	25164	-486	317	10.9	11.1	-0.2	12.8
1996	2264522	23919	26222	-2303	327	10.6	11.6	-1.0	13.7
1997	2264142	23074	26373	-3299	241	10.2	11.6	-1.5	10.4
1998	2263761	22028	26844	-4816	250	9.7	11.9	-2.1	11.3
1999	2263380	21233	27520	-6287	222	9.4	12.2	-2.8	10.5
2000	2262998	21879	28180	-6301	222	9.7	12.5	-2.8	10.1
2001	2262616	22917	26766	-3849	228	10.1	11.8	-1.7	9.9
2002	2135393	22794	28018	-5224	224	10.7	13.1	-2.4	9.8
2003	2126566	23507	28372	-4865	222	11.1	13.3	-2.3	9.4
2004	2118067	23004	28948	-5944	195	10.9	13.7	-2.8	8.5
2005	2107507	21017	30084	-9067	189	10.0	14.3	-4.3	9.0

Table. Natural changes of population, Šumadija and West Serbia

Year	Number of population	Livebirths	Deaths	Natural increase	Infants deaths	per 1000 population			Infant deaths per 1000 livebirths
						Livebirths	Deaths	Natural increase	
2006	2094888	20256	28826	-8570	165	9.7	13.8	-4.1	8.1
2007	2080735	19090	28636	-9546	138	9.2	13.8	-4.6	7.2
2008	2065984	19261	28626	-9365	124	9.3	13.9	-4.5	6.4
2009	2052490	18918	29459	-10541	157	9.2	14.4	-5.1	8.3
2010	2038847	18305	28862	-10557	129	9.0	14.2	-5.2	7.0
2011	2033203	17378	29123	-11745	117	8.5	14.3	-5.8	6.7
2012	2018248	17931	28448	-10517	117	8.9	14.1	-5.2	6.5
2013	2003118	17108	28238	-11130	122	8.5	14.1	-5.6	7.1
2014	1987799	17579	28389	-10810	101	8.8	14.3	-5.5	5.7
2015	1972183	17279	29179	-11900	100	8.8	14.8	-6.0	5.8
2016	1956786	17168	28288	-11120	91	8.8	14.5	-5.7	5.3
2017	1941130	16743	29362	-12619	82	8.6	15.1	-6.5	4.9
2018	1924816	16589	28464	-11875	80	8.6	14.8	-6.2	4.8
2019	1908641	16662	28491	-11829	89	8.7	14.9	-6.2	5.3
2020	1890449	16186	32882	-16696	79	8.6	17.4	-8.8	4.9
2021	1867552	15851	38834	-22983	84	8.5	20.8	-12.3	5.3
2022	1824896	16434	30226	-13792	52	9.0	16.6	-7.6	3.2

Source: Vital Statistics, SORS

Definitions

Population size

Number of population in the respective year. The data on the number of population in 1961, 1971, 1981 and 1991 are census data, while for the inter-census years the number of population was calculated as an average inter-census difference. From 2002 are given the population estimates that were calculated according to the census of population results and the annual statistics of natural mechanical population movements.

Livebirths

Absolute number of live births in the course of a year. Live born child means a child giving vital signs after birth (breathing, i.e. heartbeat), even for the shortest time, regardless the mother's pregnancy duration.

Deaths

Absolute number of deaths in the course of a year. Deceased is a person that whenever after having been born live, shows permanently stopped vital signs.

Natural increase

Natural population increase is the number of live births minus the number of deaths.

Infants deaths

Absolute number of infants deaths in the course of a year. Deceased infant is a child that after having been born live and before aged one year, shows permanently stopped vital signs.

Livebirths, per 1 000 population

Livebirths rate is the ratio of the number of live births and the population size in the respective year. The number of live births is divided by the population size and then multiplied by 1000.

Deaths, per 1 000 population

General mortality rate represents the ratio between the number of deaths and the population size in the respective year. The number of deaths is divided by population size and then multiplied by 1000.

Natural increase, per 1 000 population

Natural population increase rate is the difference between the number of live births and the number of deaths, in relation to the population size in the respective year.

Natural population increase rate = (number of live births - number of deaths) / population size * 1000

Infants deaths, per 1 000 livebirths

Infant mortality rate is the ratio of deceased children under 1 year of age and live births in the respective year. The mortality rate is expressed per 1000 live births.

Infant mortality rate = (number of deceased children under 1 year of age / number of live births) * 1000

Additional info:



Download all database data in Excel format:

[Data](#)



DevInfo profiles:

devinfo.stat.gov.rs/SerbiaProfileLauncher/?lang=en



DevInfo online database:

devinfo.stat.gov.rs/vitalna



For additional information or questions please contact:

devinfo@stat.gov.rs